

SCULPTURE TRAIL

Can you find the ten wooden sculptures that have been carved from tree stumps?



SCULPTURES WERE CREATED BY CHAINSAW ARTISTS
ROB BECKINSALE AND JULIAN CARTER.

Bincombe Beeches Nature Reserve is a 12 acre local nature reserve owned and managed by Crewkerne Town Council. It is a spacious, natural and peaceful countryside haven, that is home to an abundance of wildlife. The reserve derives its name from the magnificent line of beech trees, some between 150 and 200 years old, which majestically crown the town side of the hill.

The views from Bincombe Beeches are superb, extending in the west from the Coker Ridge to Chard in the East. On a clear day with the aid of binoculars, it is possible to see Glastonbury Tor and the Quantock and Mendip Hills.



The reserve can be accessed from several footpaths including a steep path leading directly from the town centre signposted from the road in the north-east corner of Market Square.

Disabled Parking is only available at Beechwood Drive.

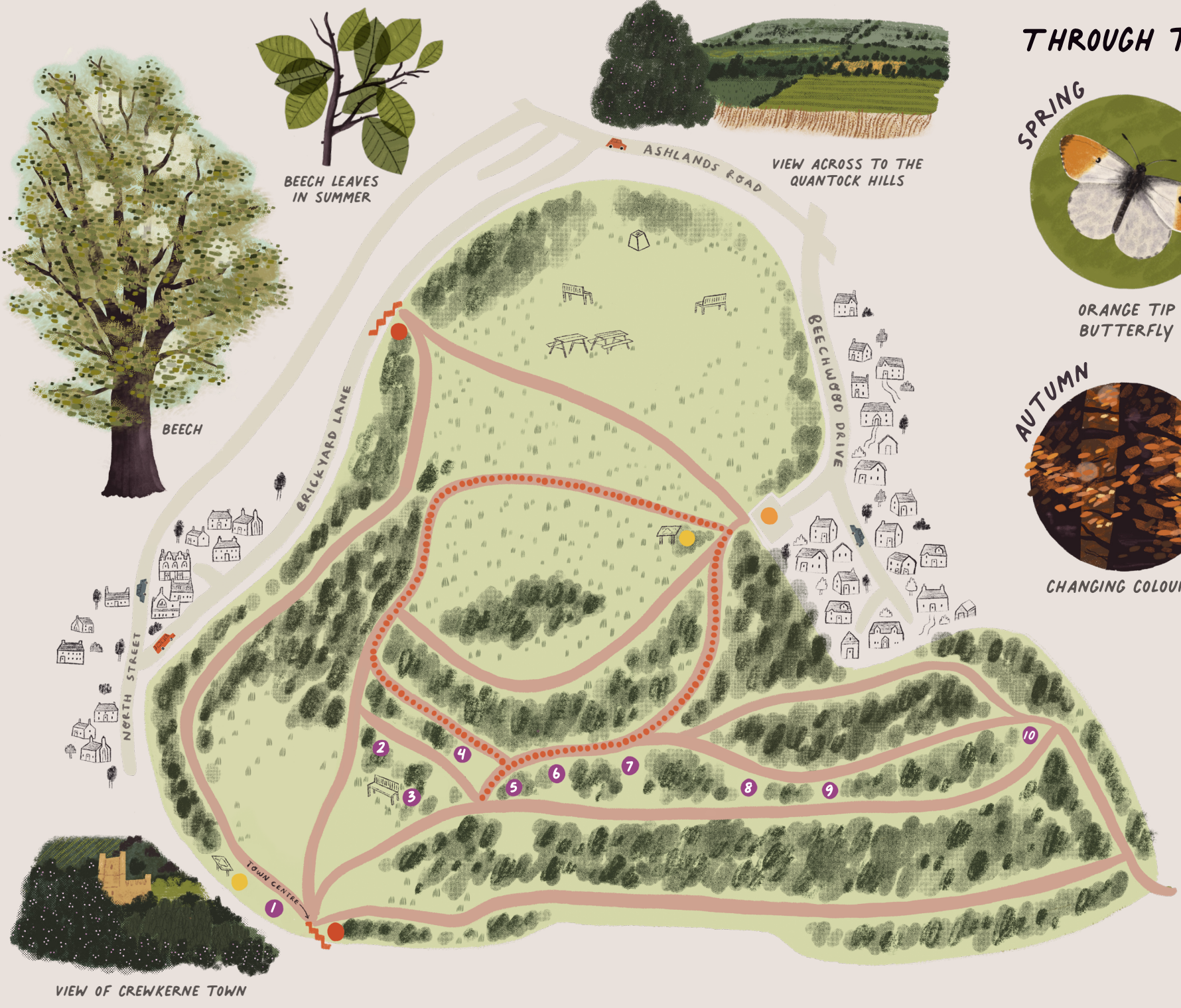


Scan here to find out more or visit
www.discovercrewkerne.org.uk/nature-reserve



DESIGN & ILLUSTRATION: © RACHEL AKERMAN

BINCOMBE BEECHES NATURE RESERVE



BEECH LEAVES IN SUMMER



VIEW ACROSS TO THE QUANTOCK HILLS

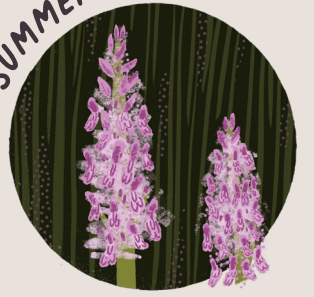
THROUGH THE SEASONS . . .

SPRING



ORANGE TIP BUTTERFLY

SUMMER



COMMON SPOTTED ORCHID

AUTUMN



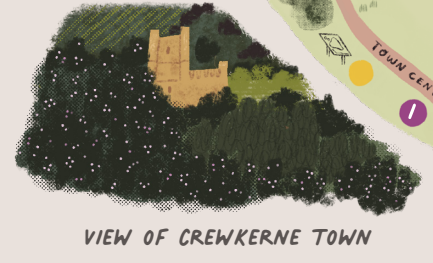
CHANGING COLOURS

WINTER



BRAMBLING FINCH

- KEY**
- Easy access trail
 - Information boards
 - Disabled Parking
 - Steep step access
-
- WOODEN SCULPTURES**
- 1 Acorn
 - 2 Woodpecker
 - 3 Large Owl
 - 4 Beetle
 - 5 Squirrel
 - 6 Snail
 - 7 Small Owl
 - 8 Bug Hotel
 - 9 Rabbit
 - 10 Hedgehog



VIEW OF CREWKERNE TOWN